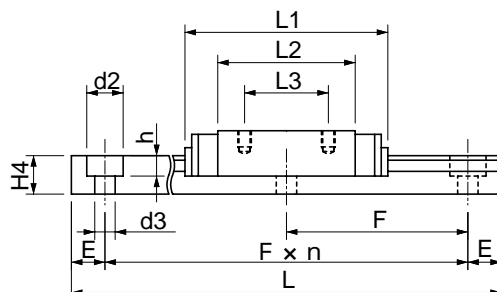
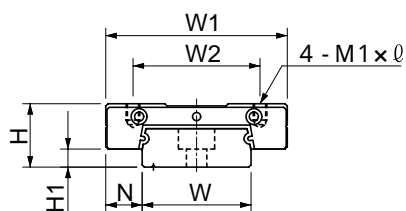
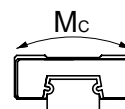
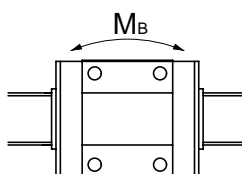
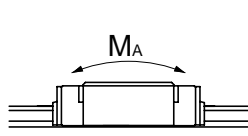
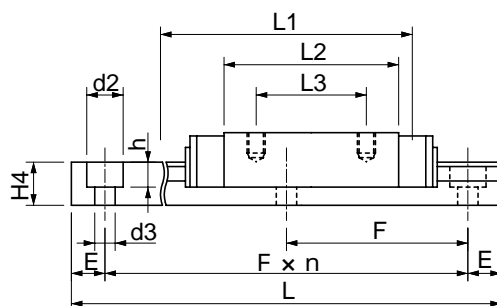
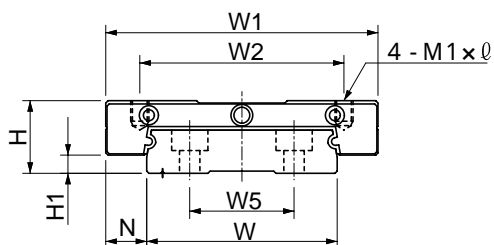




LMBM9W、12W



LMBM15W



単位 mm

軌道台寸法 Rail track dimension								基本定格荷重 Basic rated load [N]		静定格トルク Rated static torque [ N · m ]			質量 Weight	
W	H4	W5	d2	d3	h	E	F	C	Co	MA	MB	MC	スライド ユニット Slide Unit [kg]	軌道台 Track [kg/m]
14	5.2	-	6	3.5	3.2	10	30	1370	2160	5.39	5.39	15.2	0.03	0.51
18	7.5	-	6	3.5	4.5	10	30	2450	3920	16.3	16.3	36.0	0.04	1.08
24	8.5	-	8	4.5	4.5	15	40	4020	6080	17.2	18.6	47.6	0.08	1.5
42	9.5	23	8	4.5	4.5	15	40	6660	9800	35.2	38.2	137	0.17	3.0