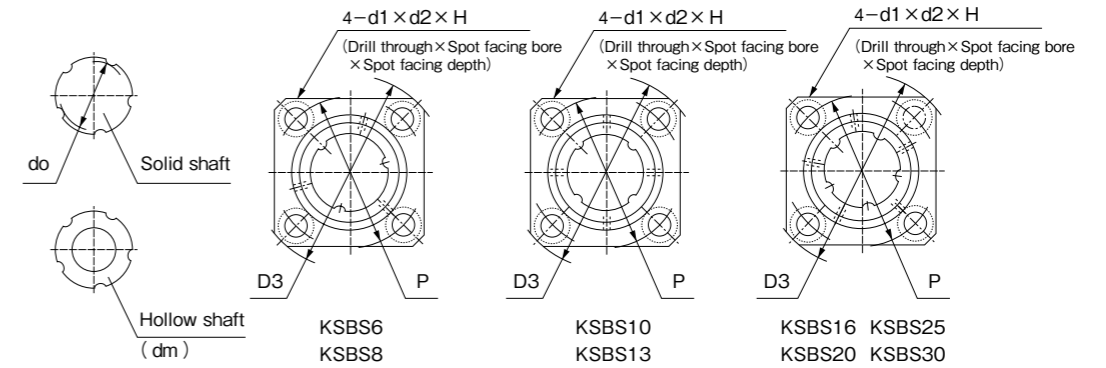
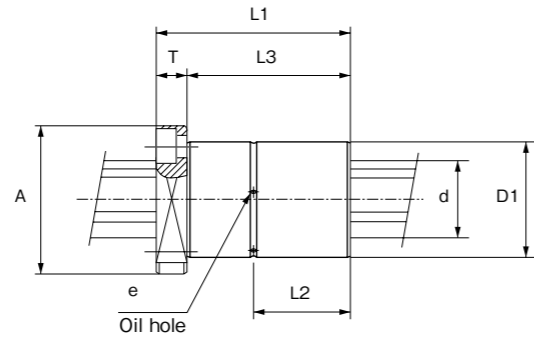
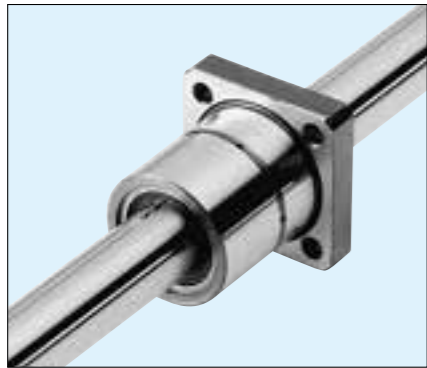


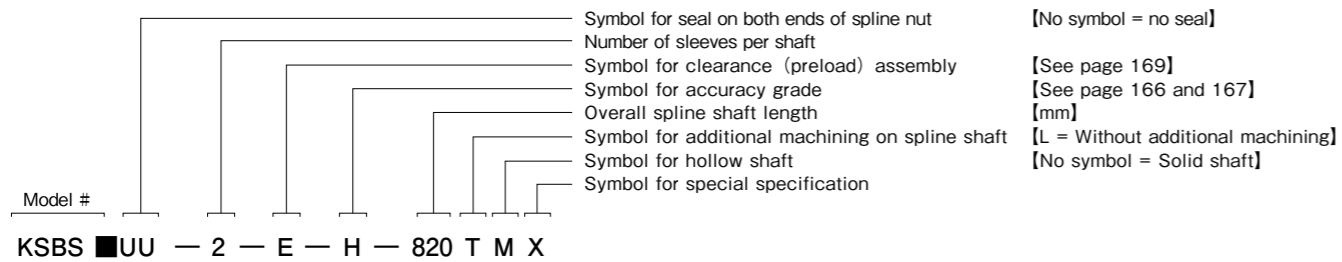
■ Square Flange Type KSBS Series



Shaft dia. (mm)	Model #		Outer dia.		Length	Dimensions of flange						H	L2	L3	Oil hole e
	No seal	With seals	D1	(h6)		L1	A	D3	T	P	d1				
6	KSBS6	KSBS6UU	14	0	25	30	30	6	22	3.5	6	3.1	12.5	19	1.5
8	KSBS8	KSBS8UU	16	-0.011	25	32	32	6	24	3.5	6	3.1	12.5	19	1.5
10	KSBS10	KSBS10UU	21	0	33	41	41	8	30	4.5	8	5.3	16.5	25	1.5
13	KSBS13	KSBS13UU	24	-0.013	36	45	45	8	34	4.5	8	5.3	18	28	1.5
16	KSBS16	KSBS16UU	31	0	41	52	52	8	40	4.5	8	5.3	20.5	33	1.5
20	KSBS20	KSBS20UU	35		46	60	60	10	46	5.5	9.5	6.3	23	36	2
25	KSBS25	KSBS25UU	42	-0.016	60	68	68	10	54	5.5	9.5	6.3	30	50	2
30	KSBS30	KSBS30UU	47		66	77	77	12	60	6.6	12.5	7.6	33	54	2.5

Bore dia. dm	Minor dia. do	Number of grooves	Basic rated radial load (kN)		Basic rated torque (N · m)		Static rated moment (N · m)		Weight (kg)		Dia. (h7) d
			Dynamic Cr	Static Cor	Dynamic Ct	Static Cot	Mpo- I	Mpo- II	Shaft / m	Sleeve	
2	5.6	3	1.2	2.1	3.8	7	5	36	0.23	0.02	6
3	7.6		1.2	2.1	4.8	8.7	5	36	0.39	0.023	8
4	10		2.4	4.3	11	21	15	102	0.65	0.08	10.4
4	13	4	3.3	5.9	20	37	22	148	1.11	0.09	13.4
6	16		3.8	6.9	32	58	32	216	1.65	0.14	16.6
8	20	5	4.6	8.3	46	84	42	276	2.57	0.21	20.9
12	25		10.8	19.4	135	244	113	773	4.04	0.27	25.8
17	30		12.3	22.2	181	327	136	937	5.85	0.4	30.8

● Code Name



- Note
- 1) Spline nut and shaft are supplied as a matched set.
 - 2) See page 170 for fitting dimensions between spline nut and housing box.
 - 3) See page 170 for detailed dimensions of keyway and key.