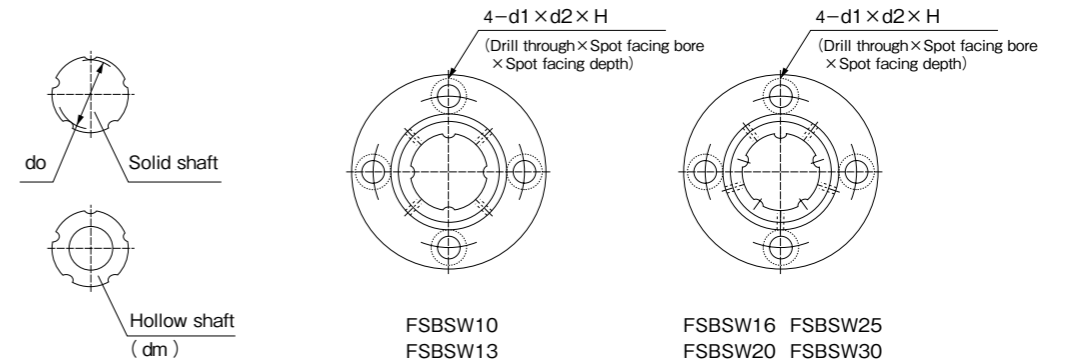
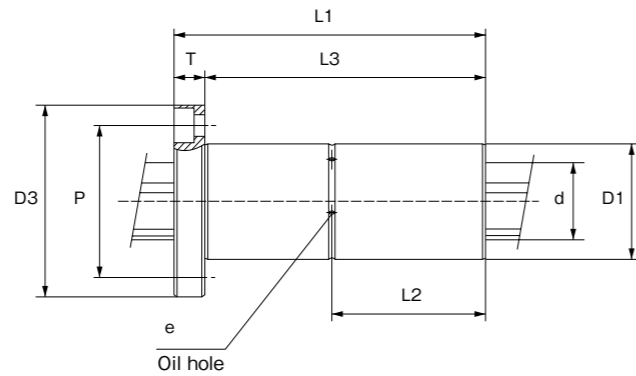


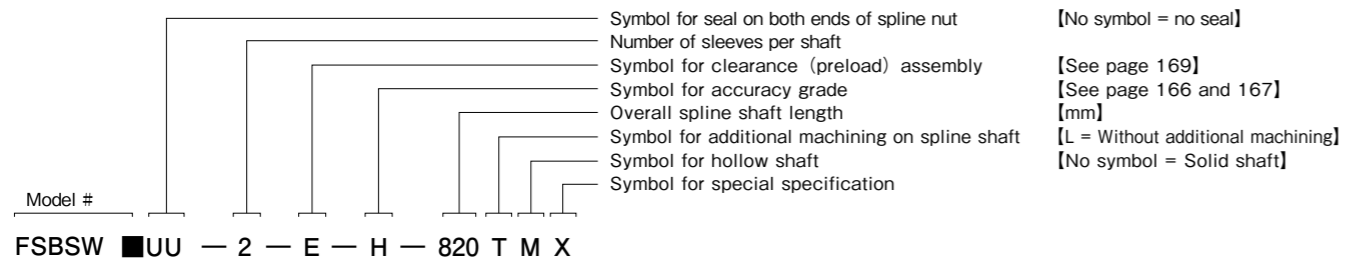
Round Flange Double Type FSBSW Series



Shaft dia. (mm)	Model #		Outer dia.		Length	Dimensions of flange					H	L2	L3	Oil hole	Bore dia.
	No seal	With seals	D1	(h6)		D3	T	P	d1	d2				e	dm
10	FSBSW10	FSBSW10UU	21	0	59	41	8	30	4.5	8	5.3	29.5	51	1.5	4
13	FSBSW13	FSBSW13UU	24	-0.013	64	45	8	34	4.5	8	5.3	32	56	1.5	4
16	FSBSW16	FSBSW16UU	31	0	74	52	8	40	4.5	8	5.3	37	66	1.5	6
20	FSBSW20	FSBSW20UU	35		84	60	10	46	5.5	9.5	6.3	42	74	2	8
25	FSBSW25	FSBSW25UU	42		-0.016	110	68	10	54	5.5	9.5	6.3	55	100	2
30	FSBSW30	FSBSW30UU	47		122	77	12	60	6.6	12.5	7.6	61	110	2.5	17

Minor dia. do	Number of grooves	Basic rated radial load (kN)		Basic rated torque (N · m)		Static rated moment (N · m) Mpo- I	Weight (kg)		Dia. (h7) d
		Dynamic Cr	Static Cor	Dynamic Ct	Static Cot		Shaft / m	Sleeve	
10	4	4.8	8.7	23	43	82	0.65	0.13	10.4
13		6.6	11.8	41	74	116	1.11	0.15	13.4
16	5	7.7	13.9	64	116	176	1.65	0.27	16.6
20		9.3	16.7	93	168	228	2.57	0.4	20.6
25		21.6	38.9	271	488	640	4.04	0.57	25.8
30		24.7	44.4	363	653	787	5.85	0.72	30.8

Code Name



- Note 1) Spline nut and shaft are supplied as a matched set.
 2) See page 170 for fitting dimensions between spline nut and housing box.
 3) See page 170 for detailed dimensions of keyway and key.