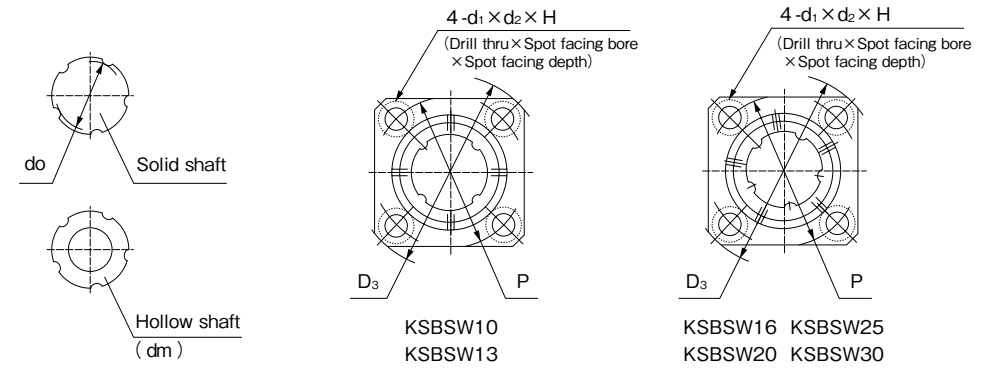
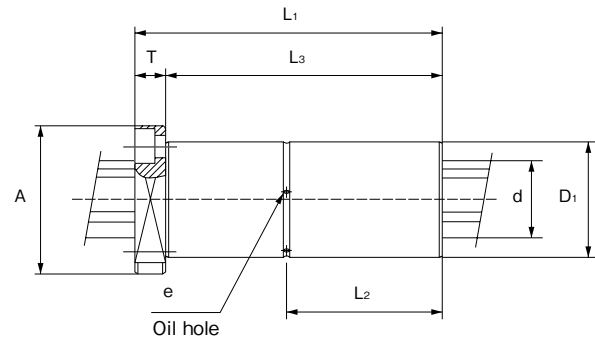


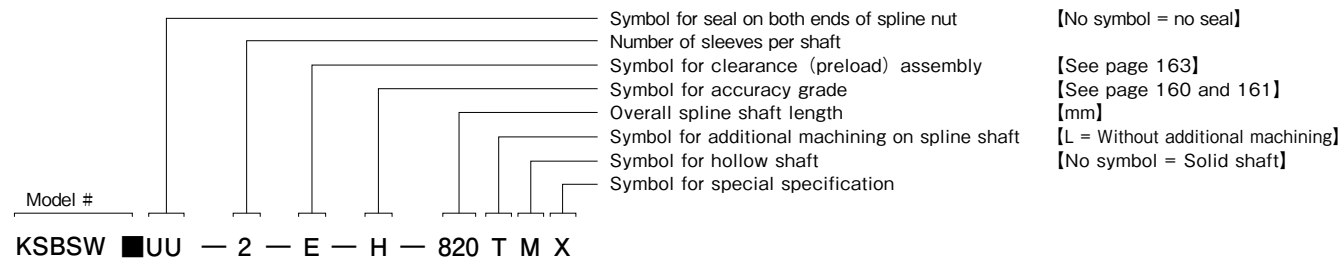
■ Square Flange Double Type KSBSW Series



Shaft dia. (mm)	Model #		Outer dia.		Length	Dimensions of flange						H	L ₂	L ₃	Oil hole e
	No seal	With seals	D ₁	(h6)		L ₁	A	D ₃	T	P	d ₁				
10	KSBSW10	KSBSW10UU	21	0	59	32	41	8	30	4.5	8	5.3	29.5	51	1.5
13	KSBSW13	KSBSW13UU	24	-0.013	64	35	45	8	34	4.5	8	5.3	32	56	1.5
16	KSBSW16	KSBSW16UU	31	0	74	39	52	8	40	4.5	8	5.3	37	66	1.5
20	KSBSW20	KSBSW20UU	35		84	45	60	10	46	5.5	9.5	6.3	42	74	2
25	KSBSW25	KSBSW25UU	42		-0.016	110	51	68	10	54	5.5	9.5	6.3	55	100
30	KSBSW30	KSBSW30UU	47		122	59	77	12	60	6.6	12.5	7.6	61	110	2.5

Bore dia. dm	Minor dia. do	Number of grooves	Basic rated radial load (kN)		Basic rated torque (N · m)		Static rated moment (N · m) Mpo · I	Weight (kg)		Dia. (h7) d
			Dynamic Cr	Static Cor	Dynamic Ct	Static Cot		Shaft / m	Sleeve	
4	10	4	4.8	8.7	23	43	82	0.65	0.12	10.4
4	13		6.6	11.8	41	74	116	1.11	0.13	13.4
6	16	5	7.7	13.9	64	116	176	1.65	0.22	16.6
8	20		9.3	16.7	93	168	228	2.57	0.33	20.6
12	25		21.6	38.9	271	488	640	4.04	0.47	25.8
17	30		24.7	44.4	363	653	787	5.85	0.6	30.8

● Code Name



- Note 1) Spline nut and shaft are supplied as a matched set.
 2) See page 164 for fitting dimensions between spline nut and housing box.
 3) See page 164 for detailed dimensions of keyway and key.