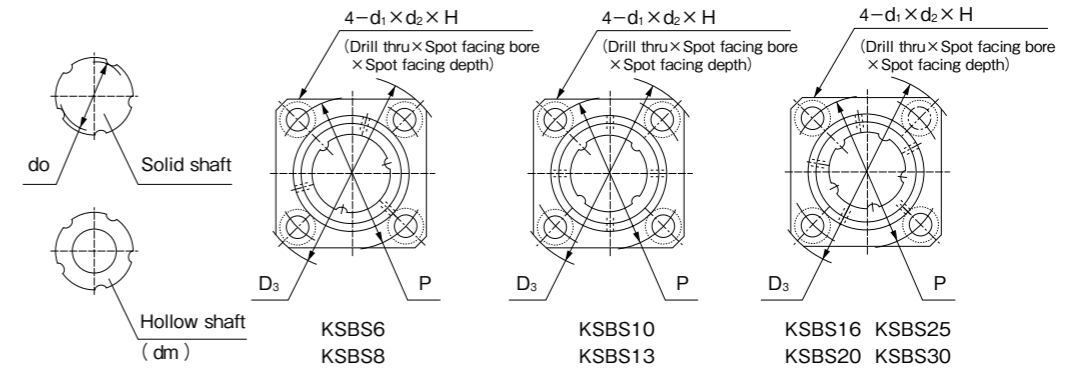
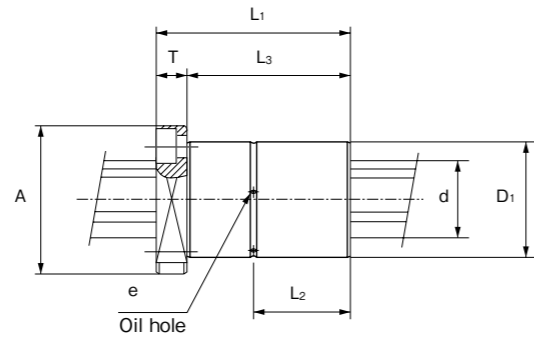


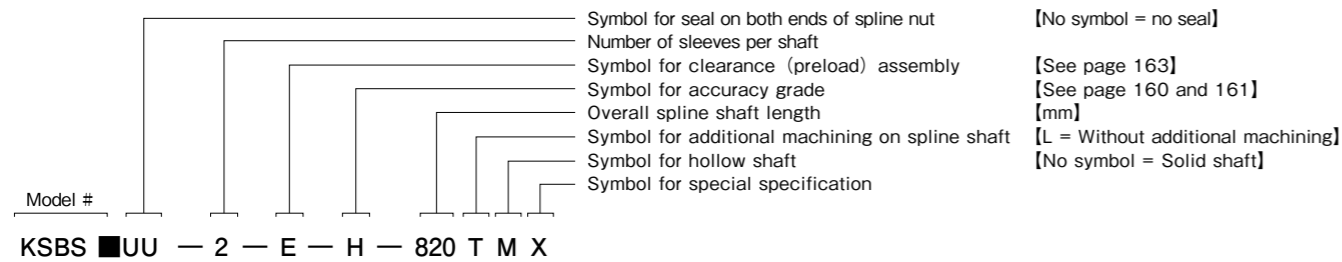
■ Square Flange Type KSBS Series



Shaft dia. (mm)	Model #		Outer dia.		Length	Dimensions of flange						H	L <sub>2</sub>	L <sub>3</sub>	Oil hole e
	No seal	With seals	D <sub>1</sub>	(h6)		L <sub>1</sub>	A	D <sub>3</sub>	T	P	d <sub>1</sub>				
6	KSBS 6	KSBS 6UU	14	0 -0.011	25	24	30	6	22	3.5	6	3.1	12.5	19	1.5
8	KSBS 8	KSBS 8UU	16		25	26	32	6	24	3.5	6	3.1	12.5	19	1.5
10	KSBS10	KSBS10UU	21	0 -0.013	33	32	41	8	30	4.5	8	5.3	16.5	25	1.5
13	KSBS13	KSBS13UU	24		36	35	45	8	34	4.5	8	5.3	18	28	1.5
16	KSBS16	KSBS16UU	31	0 -0.016	41	39	52	8	40	4.5	8	5.3	20.5	33	1.5
20	KSBS20	KSBS20UU	35		46	45	60	10	46	5.5	9.5	6.3	23	36	2
25	KSBS25	KSBS25UU	42		60	51	68	10	54	5.5	9.5	6.3	30	50	2
30	KSBS30	KSBS30UU	47		66	59	77	12	60	6.6	12.5	7.6	33	54	2.5

Bore dia. dm	Minor dia. do	Number of grooves	Basic rated radial load (kN)		Basic rated torque (N · m)		Static rated moment (N · m)		Weight (kg)		Dia. (h7) d
			Dynamic Cr	Static Cor	Dynamic Ct	Static Cot	Mpo- I	Mpo- II	Shaft / m	Sleeve	
2	5.6	3	1.2	2.1	3.8	7	5	36	0.23	0.02	6
3	7.6		1.2	2.1	4.8	8.7	5	36	0.39	0.03	8
4	10	4	2.4	4.3	11	21	15	102	0.65	0.08	10.4
4	13		3.3	5.9	20	37	22	148	1.11	0.09	13.4
6	16	5	3.8	6.9	32	58	32	216	1.65	0.14	16.6
8	20		4.6	8.3	46	84	42	276	2.57	0.21	20.6
12	25		10.8	19.4	135	244	113	773	4.04	0.27	25.8
17	30		12.3	22.2	181	327	136	937	5.85	0.4	30.8

● Code Name



- Note 1) Spline nut and shaft are supplied as a matched set.  
2) See page 164 for fitting dimensions between spline nut and housing box.  
3) See page 164 for detailed dimensions of keyway and key.