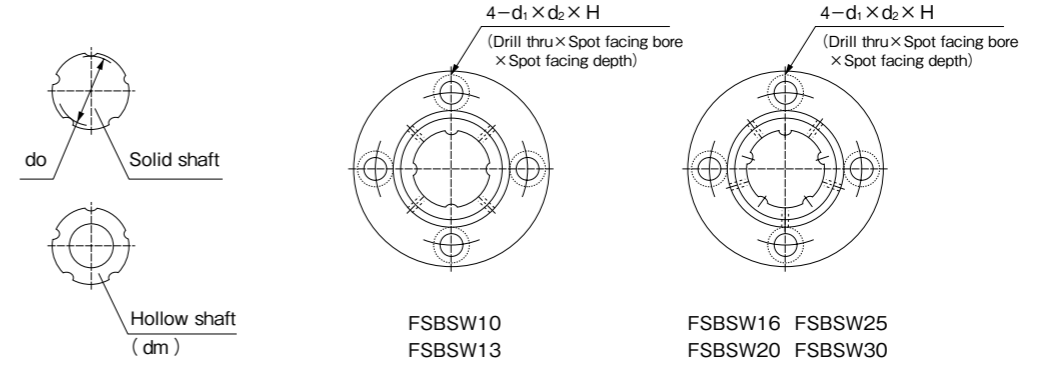
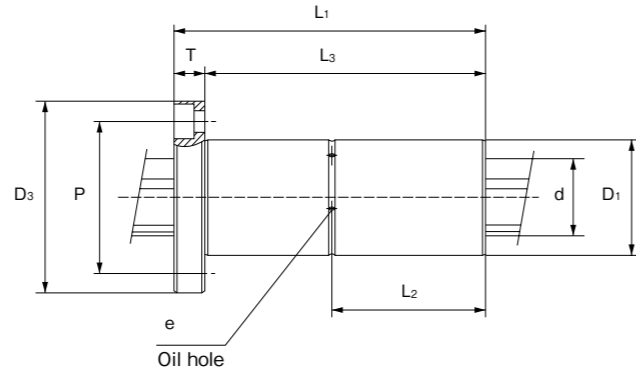
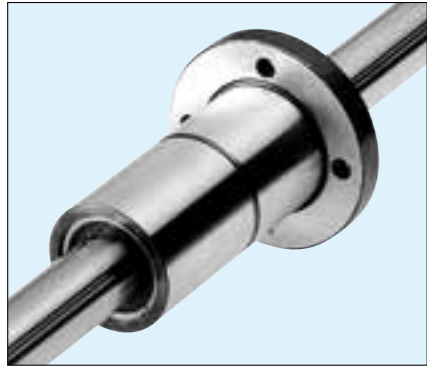


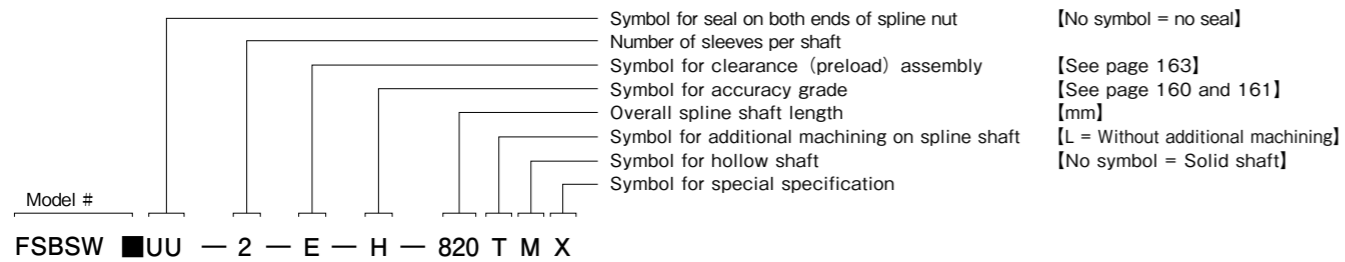
Round Flange Double Type FSBSW Series



Shaft dia. (mm)	Model #		Outer dia.		Length L ₁	Dimensions of flange					H	L ₂	L ₃	Oil hole e	Bore dia. dm
	No seal	With seals	D ₁	(h6)		D ₃	T	P	d ₁	d ₂					
10	FSBSW10	FSBSW10UU	21	0 -0.013	59	41	8	30	4.5	8	5.3	29.5	51	1.5	4
13	FSBSW13	FSBSW13UU	24		64	45	8	34	4.5	8	5.3	32	56	1.5	4
16	FSBSW16	FSBSW16UU	31	0 -0.016	74	52	8	40	4.5	8	5.3	37	66	1.5	6
20	FSBSW20	FSBSW20UU	35		84	60	10	46	5.5	9.5	6.3	42	74	2	8
25	FSBSW25	FSBSW25UU	42		110	68	10	54	5.5	9.5	6.3	55	100	2	12
30	FSBSW30	FSBSW30UU	47		122	77	12	60	6.6	12.5	7.6	61	110	2.5	17

Minor dia. d ₀	Number of grooves	Basic rated radial load (kN)		Basic rated torque (N · m)		Static rated moment (N · m) M _{po} -I	Weight (kg)		Dia. (h7) d
		Dynamic C _r	Static C _{or}	Dynamic C _t	Static C _{ot}		Shaft/m	Sleeve	
10	4	4.8	8.7	23	43	82	0.65	0.13	10.4
13		6.6	11.8	41	74	116	1.11	0.15	13.4
16	5	7.7	13.9	64	116	176	1.65	0.27	16.6
20		9.3	16.7	93	168	228	2.57	0.4	20.6
25		21.6	38.9	271	488	640	4.04	0.57	25.8
30		24.7	44.4	363	653	787	5.85	0.72	30.8

Code Name



- Note 1) Spline nut and shaft are supplied as a matched set.
 2) See page 164 for fitting dimensions between spline nut and housing box.
 3) See page 164 for detailed dimensions of keyway and key.