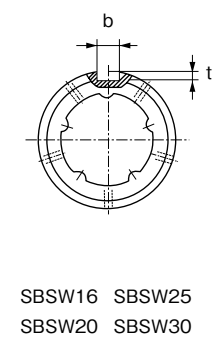
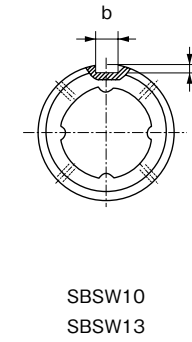
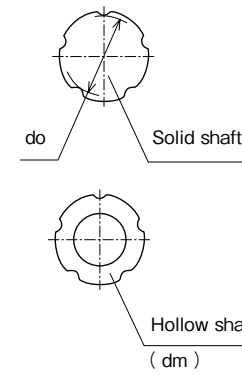
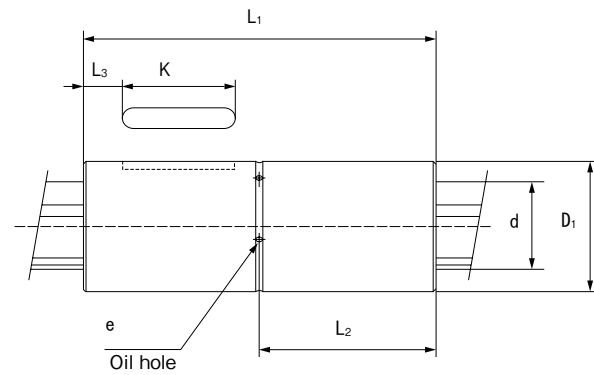
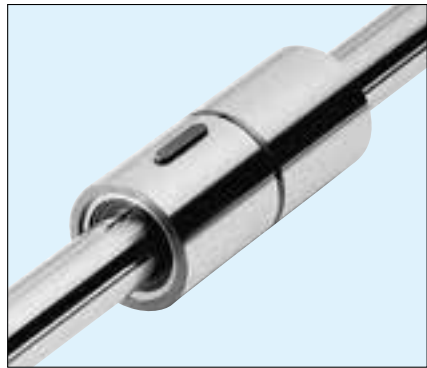


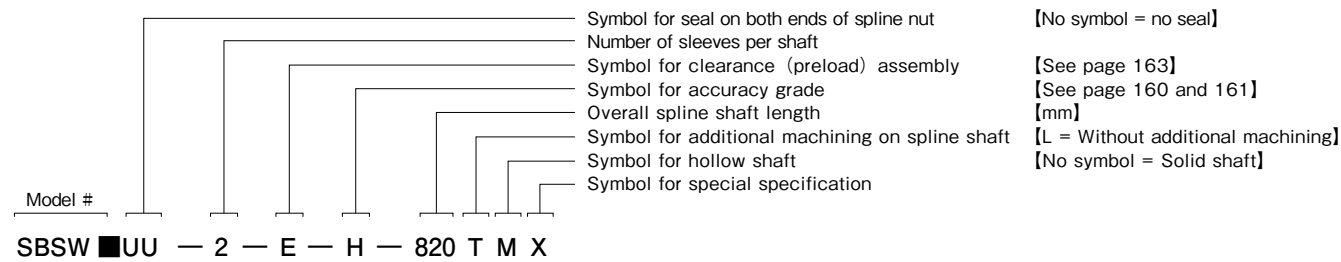
Standard Double Type SBSW Series



Shaft dia. (mm)	Model #		Outer dia.		Length	Dimensions of keyway					L ₂	L ₃	Oil hole e	Bore dia. dm
	No seal	With seals	D ₁	(h6)		b	(H8)	t	(Tol.)	K				
10	SBSW10	SBSW10UU	21	0	59	3	+0.014	1.5	+0.050 0	14	29.5	9.5	1.5	4
13	SBSW13	SBSW13UU	24	-0.013	64	3	0	1.5		14	32	11	1.5	4
16	SBSW16	SBSW16UU	31	0	74	3.5	+0.018 0	2		18	37	11.5	1.5	6
20	SBSW20	SBSW20UU	35		84	4		2.5		20	42	13	2	8
25	SBSW25	SBSW25UU	42		110	4		2.5		29	55	15.5	2	12
30	SBSW30	SBSW30UU	47		122	4		2.5		33	61	16.5	2.5	17

Minor dia. do	Number of grooves	Basic rated radial load (kN)		Basic rated torque (N · m)		Static rated moment (N · m) Mpo- I	Weight (kg)		Dia. (h7) d
		Dynamic Cr	Static Cor	Dynamic Ct	Static Cot		Shaft / m	Sleeve	
10	4	4.8	8.7	23	43	82	0.65	0.07	10.4
13		6.6	11.8	41	74		1.11	0.09	13.4
16	5	7.7	13.9	64	116	176	1.65	0.19	16.6
20		9.3	16.7	93	168		2.57	0.23	20.6
25		21.6	38.9	271	488		4.04	0.37	25.8
30		24.7	44.4	363	653		5.85	0.5	30.8

Code Name



- Note 1) Spline nut and shaft are supplied as a matched set.
2) See page 164 for fitting dimensions between spline nut and housing box.
3) See page 164 for detailed dimensions of keyway and key.