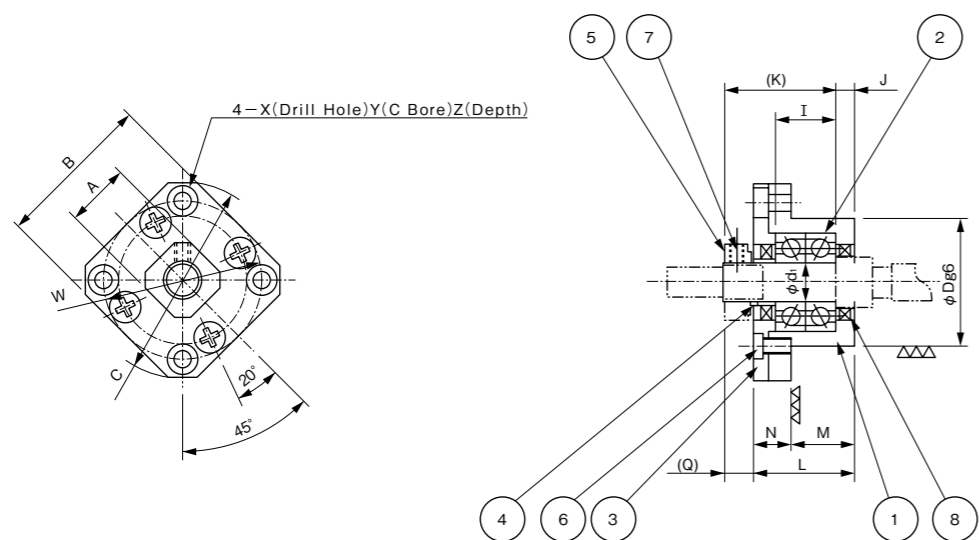


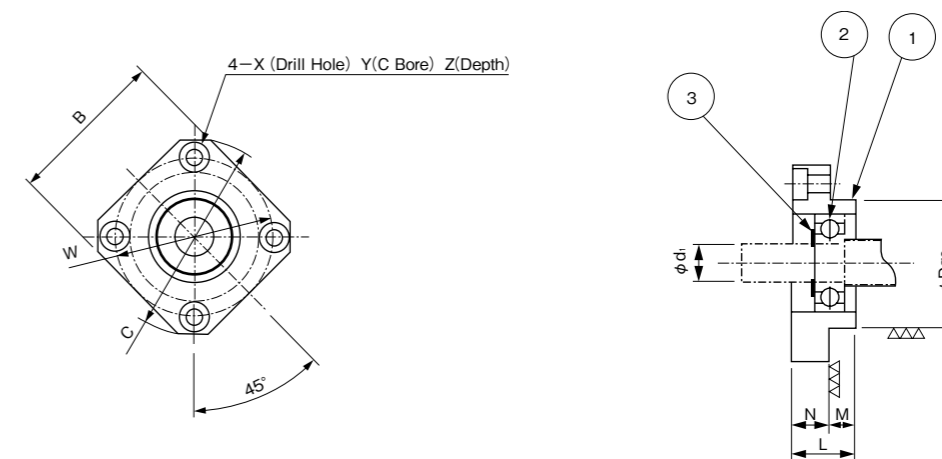
Round type Support Unit (Fixed support side)



Unit : mm

Identification Number	d <sub>1</sub>	L	M	N	D	I	J	K	A	B	C	W	X	Y	Z	Q	Bearing No.
RPUT-08F	8	23	14	9	28	10	4	23	13	35	43	35	3.4	6.5	3	5	708ADFP5
RPUT-10F	10	27	17	10	34	12	5	29.5	17	42	52	42	4.5	8	4	7.5	7000ADFP5
RPUT-12F	12	27	17	10	36	12	5	36.8	19	44	54	44	4.5	8	4	7.5	7001ADFP5
RPUT-15F	15	32	17	15	40	11	6	45.8	22	52	63	50	5.5	9.5	6	10	7002ADFP5
RPUT-20F	20	52	30	22	57	20	10	57.8	30	68	85	70	6.5	11	10	10	7204ADFP5
RPUT-25F	25	57	30	27	63	20	10	72.8	35	79	98	80	9	15	13	13	7205ADFP5
RPUT-30F	30	62	32	30	75	20	12	71.8	40	93	117	95	11	17.5	15	13	7206ADFP5

Round type Support Unit (Simple support side) RPUT-S series



Unit : mm

Identification Number	d <sub>1</sub>	L	M	N	D	B	C	W	X	Y	Z	Bearing No.	Retaining ring
RPUT- 8S	6	10	4	6	22	28	36	28	3.4	6.5	3	606ZZ	C6
RPUT-10S	8	12	5	7	28	35	43	35	3.4	6.5	3	608ZZ	C8
RPUT-12S	10	15	8	7	34	42	52	42	4.2	8	4.4	6000ZZ	C10
RPUT-15S	15	17	8	9	40	52	63	50	5.2	9.5	5.4	6002ZZ	C15
RPUT-20S	20	20	9	11	57	68	85	70	6.3	11	6.5	6004ZZ	C20
RPUT-25S	25	24	10	14	63	79	98	80	8.7	14	8.6	6205ZZ	C25
RPUT-30S	30	27	9	18	75	93	117	95	10.7	18	10.8	6206ZZ	C30

Part No.	Part Name	Quantity	Remarks
1	Housing	1	
2	Bearing	1set	
3	Plate	1	
4	Spacer	2	1pc. for RPUT-8F~10F
5	Lock Nut	1	
6	Screw thread	4	countersunk head screw for RPUT-8F Hexagon socket head cap screw for RPUT-10~30F
7	Set Screw	2	A brass piece is attached. (1pc. for RPUT-8F&10F)
8	Oil Seal	2	Not available for RPUT-8F

1. Do not disassemble Support Units adjusted on proper preload.
2. Bearings in Support Units are greased properly.
3. After having fastened shaft end with a lock nut, put a brass piece into a drilled hole before tightening with a set screw slightly.

Part No.	Part Name	Quantity
1	Housing	1
2	Bearing	1
3	Snap ring	1