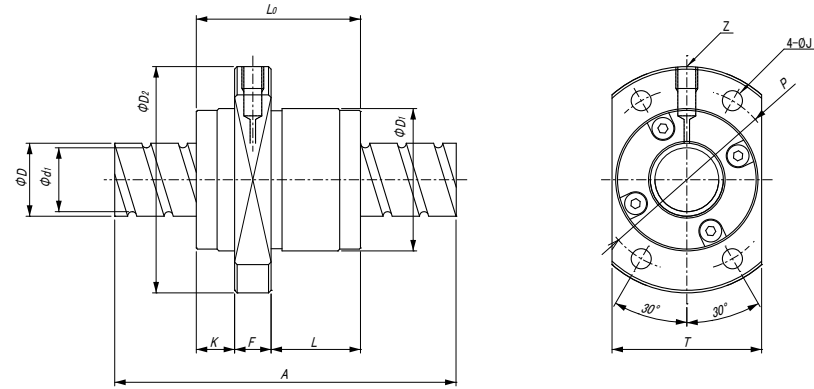


TSK Super-High Speed Rolled Ball Screw RBE series (Flange A type)



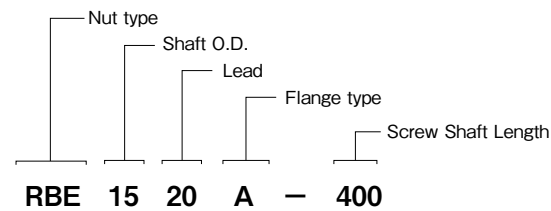
Unit : mm

Identification Number of Nut	Screw Shaft		Lead (Pitch)	Circuit Direction	Nut					
	Outer Dia. D	Root Dia. d ₁			Ball Dia. d	Number of Circuit m	Outer Dia. D ₁	Length		
								K	L	Lo
RBE 0808A	8	6.8	8 (4)	Right	1.588	3	18	6	10	20
RBE 0810A	8	6.7	10 (5)	Right	1.588	3	18	7.2	13	24.2
RBE 0812A	8	6.7	12 (6)	Right	1.588	3	18	6	17	27
RBE 1010A	10	8.1	10 (5)	Right	2.381	3	23	6	13	24
RBE 1015A	10	8.1	15 (7.5)	Right	2.381	3	23	6	13	33
RBE 1020A	10	8.1	20 (10)	Right	1.588	3	20	5	13	23
RBE 1210A	12	10.1	10 (5)	Right	2.381	3	24	8.5	15.5	30
RBE 1230A	12	9.5	30 (5)	Right	3.175	2	32	10	15	35
RBE 1510A	15	12.6	10 (5)	Right	3.175	5	34	11	21	43
RBE 1530A	15	12.5	30 (7.5)	Right	3.175	3	32	6	17	33
RBE 1616A	16	13.4	16 (8)	Right	2.778	3	32	6.5	21.5	38
RBE 2020A	20	17.5	20 (10)	Right	3.175	3	39	10.5	24.5	45
RBE 2030A	20	17.5	30 (15)	Right	3.175	3	39	8	46	64
RBE 2525A	25	21.9	25 (6.25)	Right	3.969	4	47	8	35	55

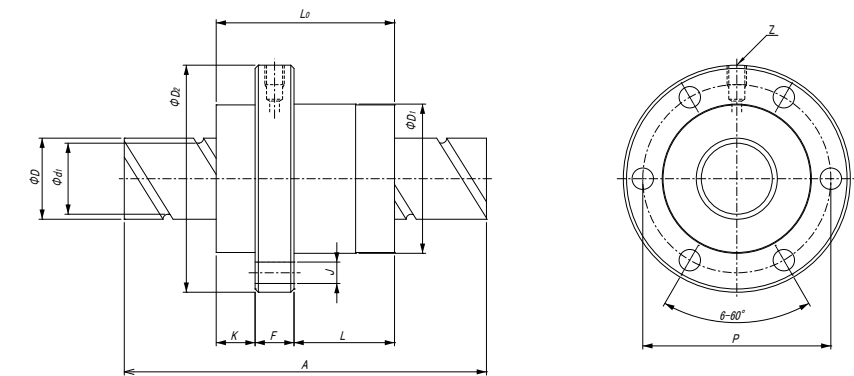
Identification Number of Nut	Flange						Axial Play (MAX)	Basic Load Rating (N)		Shaft length (MAX) A
	Outer Dia. D ₂	Thickness F	Width T	P.C.D. P	Hole Dia. J	Oil Hole Z		Dynamic Ca	Static Coa	
RBE 0808A	31	4	20	25	3.4	-	0.1	2200	3800	500
RBE 0810A	31	4	20	25	3.4	-	0.1	2200	3800	500
RBE 0812A	31	4	20	25	3.4	-	0.1	2200	4000	500
RBE 1010A	40	5	25	32	4.5	-	0.1	3300	5900	600
RBE 1015A	40	5	25	32	4.5	-	0.1	3300	6400	600
RBE 1020A	37	5	22	29	4.5	-	0.1	2100	4000	600
RBE 1210A	40	8	26	32	4.5	-	0.1	5100	9800	1000
RBE 1230A	56	10	32	43	5.5	M6×1.0	0.1	4800	6550	1000
RBE 1510A	57	11	34	45	5.5	M6×1.0	0.1	12000	25000	1500
RBE 1530A	53	10	33	43	5.5	M6×1.0	0.1	4300	9300	1500
RBE 1616A	53	10	38	42	4.5	M6×1.0	0.1	5800	12900	1500
RBE 2020A	62	10	41	50	5.5	M6×1.0	0.1	7700	22300	2000
RBE 2030A	62	10	39	50	5.5	M6×1.0	0.1	10600	23300	2000
RBE 2525A	74	12	49	60	6.6	M6×1.0	0.12	12100	35000	2500

Note : The basic load rating (Co,Coa) values are based on a rated life standard of 250km or 10⁶ revolutions.

Code Name



TSK Super-High Speed Rolled Ball Screw RBE series (Flange B type)



Unit : mm

Identification Number of Nut	Screw Shaft		Lead (Pitch)	Circuit Direction	Nut					
	Outer Dia. D	Root Dia. d ₁			Ball Dia. d	Number of Circuit m	Outer Dia. D ₁	Length		
								K	L	Lo
RBE 1520B	15	12.5	20 (10)	Right	3.175	3	34	10	27	47
RBE 1632B	16	13.7	32 (8)	Right	2.778	2	34	9	18	37
RBE 2040B	20	17.5	40 (10)	Right	3.175	2	38	10	25	45
RBE 2550B	25	21.9	50 (12.5)	Right	3.969	2	46	12	31	55
RBE 3620B	36	31.2	20 (10)	Right	6.35	5	70	20	38	76
RBE 3624B	36	30.6	24 (12)	Right	7.144	5	75	22	50	90
RBE 5050B	50	44	50 (25)	Right	7.938	3	90	24.5	71.5	118

Identification Number of Nut	Flange					Axial Play (MAX)	Basic Load Rating (N)		Shaft length (MAX) A
	Outer Dia. D ₂	Thickness F	P.C.D. P	Hole Dia. J	Oil Hole Z		Dynamic Ca	Static Coa	
RBE 1520B	55	10	45	5.5	M6×0.75	0.1	5200	8600	1500
RBE 1632B	55	10	45	5.5	M6×0.75	0.1	2500	4500	1500
RBE 2040B	58	10	48	5.5	M6×0.75	0.1	3300	6500	2000
RBE 2550B	70	12	58	6.6	M6×0.75	0.12	5000	10200	2500
RBE 3620B	110	18	90	11	-	0.19	32100	65900	3500
RBE 3624B	115	18	94	11	-	0.22	38600	78300	3500
RBE 5050B	135	22	112	14	PT1/8	0.24	32400	72600	5500

Note : The basic load rating (Co,Coa) values are based on a rated life standard of 250km or 10⁶ revolutions.

Code Name

